



Johnson Industries Ltd.

Empowering Safety with Cutting-Edge Braking Solutions

# SETTING THE STANDARD IN STORM BRAKE TECHNOLOGY



Take the First Step  
Towards The  
Longevity of Your  
Operation.

**FILL OUT AN  
APPLICATION FORM!**

<https://brakes.ca/rail-clamp-application/>

## Storm Brake Applications

- ▶ Cranes
- ▶ Stackers
- ▶ Trippers
- ▶ Shiploaders
- ▶ Reclaimers

[sales@brakes.ca](mailto:sales@brakes.ca)

[brakes.ca](https://brakes.ca)

+1 (604) 940-4555

# WHAT SETS US APART?

## Johnson Industries Storm Brakes

### ✓ Varied Holding Force

Our storm brakes offer holding capacities ranging from 1000 to 150000 lbs [4.4kN to 667kN], engineered to secure even the heaviest equipment through any conditions.

### ✓ Mounting Options

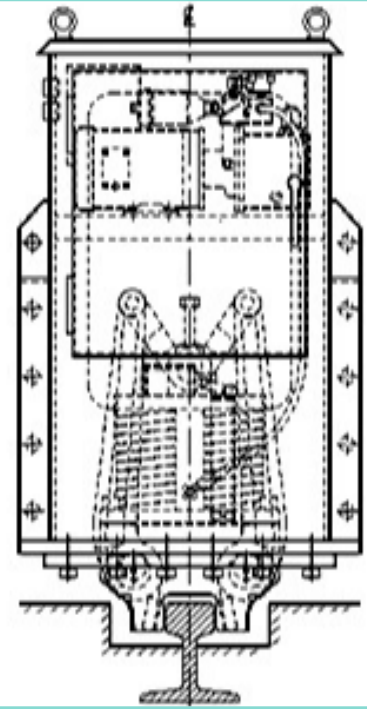
Designed for versatility, our storm brakes offer truck-end, sill-beam, and flange mounted configurations to seamlessly integrate with any system.

### ✓ Customizability

Custom mountings, coatings, materials, match-drilled flanges, dust-tight enclosures, and optional hand pumps mean our storm brakes are suitable for any application.

### ✓ Expertise

Johnson Industries delivers innovative and reliable solutions that set the industry standard, with unmatched engineering and a legacy as the original storm brake manufacturer.



Truck-End Mounted Rail Clamp with Integrated Hydraulic Power Unit

**CONTACT US TO  
DOWNLOAD OUR  
FULL TECHNICAL  
DATASHEET!**



ISO 9001 Certified

[sales@brakes.ca](mailto:sales@brakes.ca)

[brakes.ca](http://brakes.ca)

+1 (604) 940-4555